



Sugar Crystal

Designed by flaurie & finch

Featuring the Sugar Berry collection from RJR Fabrics

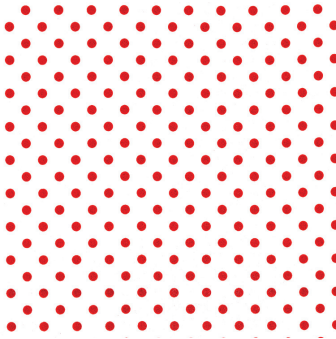


Finished quilt measures 64" square



Sugar Crystal Color Card
Sugar Berry collection

Fabric A
#3164_001



Fabric B
#3370_002



Fabric C
#3371-003



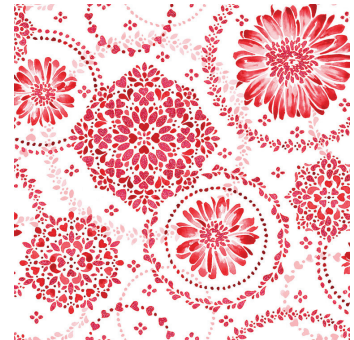
Fabric D
#3372_002



Fabric E
#3372_003



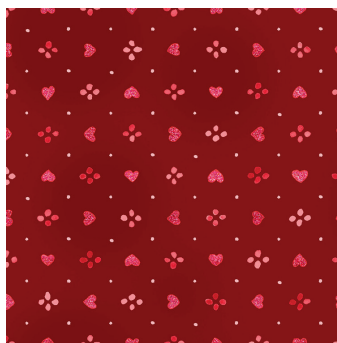
Fabric F
#3373_002



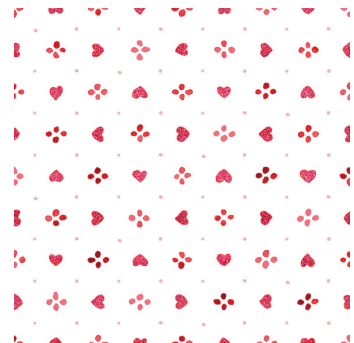
Fabric G
#3374_001



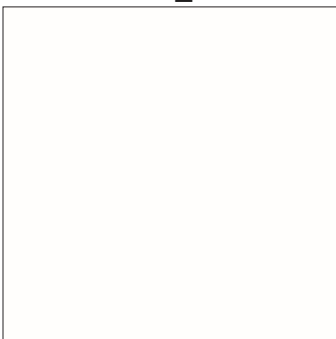
Fabric H
#3376_002



Fabric I
#3376_003



Fabric J
#370_SWAN



Yardage Requirements

(*Sugar Berry* collection)

1 fat eighth Fabric E: 3372_003

1 fat quarter each:

Fabric B: 3370-02

Fabric F: 3373_002

5/8 yard Fabric J: 370_SWAN

3/4 yard Fabric H: 3376-002

7/8 yard each:

Fabric C: 3371_003

Fabric G: 3374_001

1-1/8 yards each:

Fabric A: 3164_001

Fabric D: 3372_002

Fabric I: 3376_003

4 yards backing fabric

70" x 70" square of batting

Red embroidery floss or perle cotton

Embroidery hoop and needle

Basic sewing supplies

Cutting

Note: All strips are cut across the width of the fabric (perpendicular to the selvages) unless noted otherwise. Seams are 1/4".

From Fabric A, cut:

Twenty-three 1-1/2" x WOF strips. Subcut eight strips into thirty-two 1-1/2" x 9-1/2" strips. Piece remaining strips short ends together and cut:

Two 1-1/2" x 72-1/4" strips

Two 1-1/2" x 59-1/2" strips

Two 1-1/2" x 57-1/2" strips

Two 1-1/2" x 52-1/4" strips

Two 1-1/2" x 32-1/4" strips

Two 1-1/2" x 12-1/4" strips

From Fabric B, cut:

Two 9-1/2" squares.

From Fabric C, cut:

One 5" x WOF strip; subcut four 5" squares.

Seven 3" x WOF strips. Piece strips short ends together and cut two 3" x 64-1/2" strips and two 3" x 59-1/2" strips.

From Fabric D, cut:

One 5" x WOF strip; subcut four 5" squares.

One 3-1/8" x WOF strips; subcut thirty-two 3-1/8" squares.

Eight 2-3/4" x WOF strips; subcut sixty-four 2-3/4" x 5" rectangles.

From Fabric E, cut:

Four 5" squares.

From Fabric F, cut:

Two 9-1/2" squares.

From Fabric G, cut:

Two 14" x WOF strips; subcut three 14" squares and two 7-1/4" squares. Cut each 14" square diagonally twice to yield twelve quarter-square triangles. Cut each 7-1/4" square diagonally once to yield four half-square triangles.

From Fabric H, cut:

One 5" x WOF strip; subcut four 5" squares.

Seven 2-1/2" x WOF strips for binding.

From Fabric I, cut:

Ten 2-3/4" x WOF strips; subcut one hundred twenty-eight 2-3/4" squares.

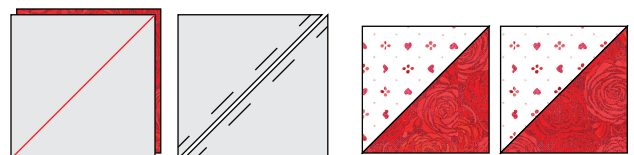
Three 3-1/8" x WOF strips; subcut thirty-two 3-1/8" squares.

From Fabric J, cut:

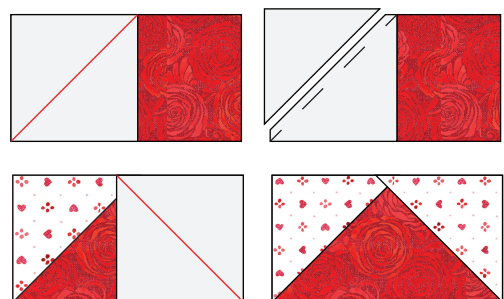
Two 10" x WOF strips; subcut five 10" squares.

Make the Star Blocks

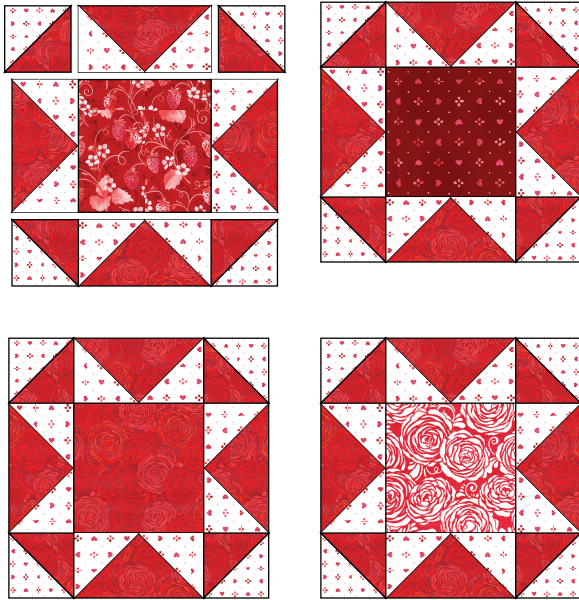
1. Draw a diagonal line on the back side of one 3-1/8" I square. Place right sides together with one 3-1/8" D square. Sew 1/4" to each side of drawn line. Cut apart on line. Repeat to create sixty-four half-square triangle units. Square to 2-3/4".



2. Draw a diagonal line on the back side of two 2-3/4" I squares. With right sides together, place one marked square at one end of one 2-3/4" x 5" D rectangle. Sew on the drawn line. Trim 1/4" away from stitching. Press seam toward resulting F triangle. Repeat for other end of rectangle. Repeat to create sixty-four flying-geese units. Square to 2-3/4" x 5".



3. Assemble one block using four half-square triangle units, four flying-geese units and one 5" center square. Sew units into rows; press. Sew rows together; press. Repeat to make sixteen Star Blocks: four each with 5-1/2" C, D, E and H center squares. Square to 9-1/2".



Make the Embroidery Blocks

1. Using your preferred transfer method, center embroidery design on one 10" J square and transfer design. Stitch design using 2-3 strands of red embroidery floss or perle cotton.
2. Trim completed block to 9-1/2" square, keeping design centered. Make a total of five blocks (one of each design).



Assembly

1. Sew one 1-1/2" x 9-1/2" A strip to opposite sides of one Star Block. Press toward the sashing strips. Repeat for each of the sixteen blocks.



2. Referring to the Quilt Assembly Diagram, lay Star Blocks, embroidery blocks, alternate 9-1/2" squares, sashing strips and H setting triangles into correct placement.

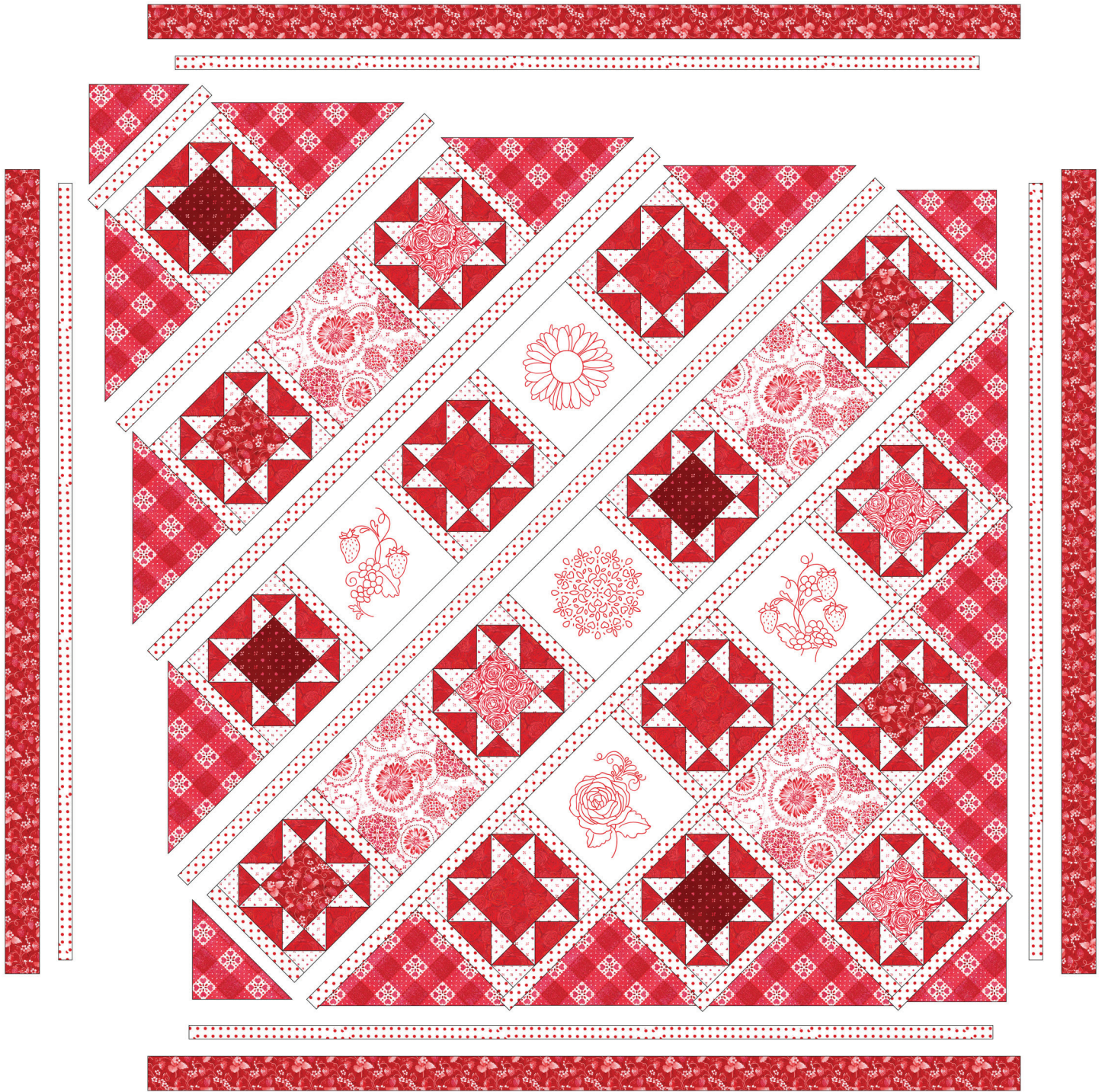
3. Sew into diagonal rows and press toward the sashing strips. Sew rows together and continue to press toward sashing strips. Trim all four quilt sides to create straight edges, at least 1/4" past block points.

4. Sew one 1-1/2" x 57-1/2" A strip to opposite sides of the quilt center. Press toward the inner border strips. Sew one 1-1/2" x 59-1/2" A strip to the top and bottom of the quilt. Press toward inner border strips.

5. Sew one 3" x 59-1/2" C strip to opposite sides of the quilt. Press toward the outer border strips. Sew one 3" x 64-1/2" C strip to the top and bottom of the quilt. Press toward outer border strips.

Finishing

1. Prepare backing by pressing well to remove any creases.
2. Layer backing, batting and runner top. Baste and quilt as desired. Trim layers even with runner top squaring corners.
3. Prepare binding using 2 1/2" x WOF H strips. Sew binding to quilt using your preferred method.



Quilt Assembly Diagram

Redwork Pattern #1

Patterns are shown at 100%. Transfer to 9-1/2" Fabric J squares using your preferred method.



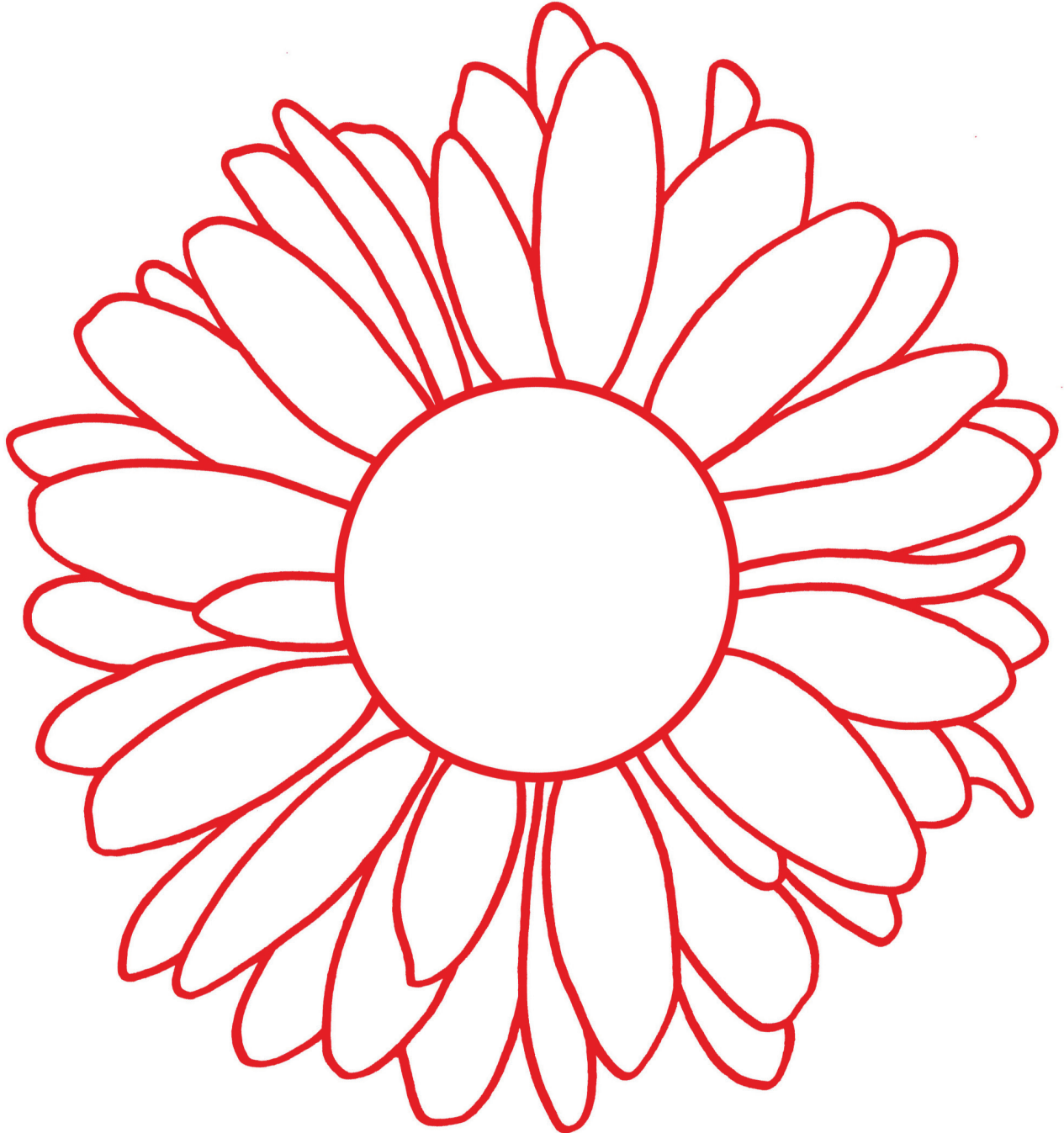
Redwork Pattern #2

Patterns are shown at 100%. Transfer to 9-1/2"
Fabric J squares using your preferred method.



Redwork Pattern #3

Patterns are shown at 100%. Transfer to 9-1/2"
Fabric J squares using your preferred method.



Redwork Pattern #4

Patterns are shown at 100%. Transfer to 9-1/2"

Fabric J squares using your preferred method.



Redwork Pattern #5

Patterns are shown at 100%. Transfer to 9-1/2"
Fabric J squares using your preferred method.

