

# Sugar Crystal Runner

Designed by flaurie & finch

Featuring the Sugar Berry collection from RJR Fabrics

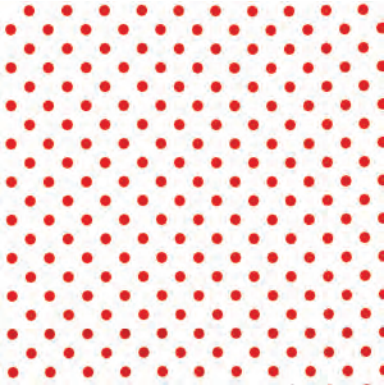


Finished runner measures 21" x 64"



Sugar Berry Table Runner Color Card  
Sugar Berry collection

Fabric A  
#3164\_001



Fabric B  
#3370\_001



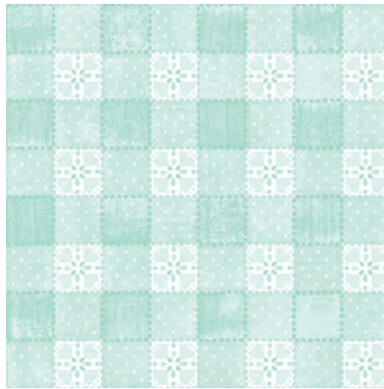
Fabric C  
#3371-001



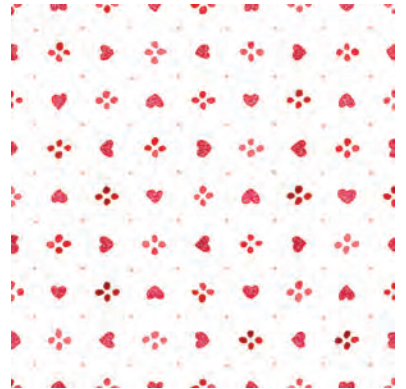
Fabric D  
#3371\_003



Fabric E  
#3374\_002



Fabric F  
#3376\_003



## Yardage Requirements

(*Sugar Berry* collection)

3/8 yard each:

Fabric C: 3371-001

Fabric F: 3376\_003

1/2 yard each:

Fabric A: 3164\_001

Fabric B: 3370\_001

5/8 yard Fabric D: 3371\_003

3/4 yard Fabric E: 3374\_002

2 yards backing fabric

27" x 70" piece of batting

Basic sewing supplies

## Cutting

**Note:** All strips are cut across the width of the fabric (perpendicular to the selvages) unless noted otherwise. Seams are 1/4".

### From Fabric A, cut:

Nine 1-1/2" x WOF strips. Subcut two strips into eight 1-1/2" x 9-1/2" strips. Piece remaining strips short ends together and cut:

Two 1-1/2" x 57-1/2" strips

Two 1-1/2" x 16-3/4" strips

Three 1-1/2" x 22-1/4" strips

Two 1-1/2" x 12-1/4" strips

### From Fabric B, cut:

Five 3" x WOF strips. Piece short ends together and cut two 3" x 59-1/2" strips and two 3" x 21-3/4" strips.

### From Fabric C, cut:

One 3-1/8" x WOF strip; subcut eight 3-1/8" squares.

Two 2-3/4" x WOF strips; subcut sixteen 2-3/4" x 5" rectangles.

### From Fabric D, cut:

One 5" x WOF strip; subcut four 5" squares.

Five 2-1/2" x WOF strips for binding.

### From Fabric E, cut:

One 14" x WOF strip; subcut two 14" squares. Cut each square diagonally twice to yield eight quarter-square triangles (you'll use six).

One 7-1/4" x WOF strip; subcut two 7-1/4" squares.

Cut each square diagonally once to yield four half-square triangles.

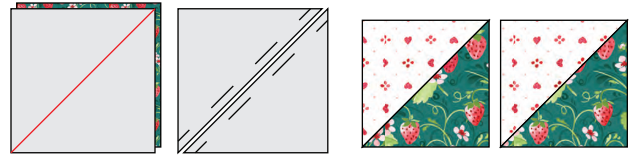
### From Fabric F, cut:

One 3-1/8" x WOF strip; subcut eight 3-1/8" squares.

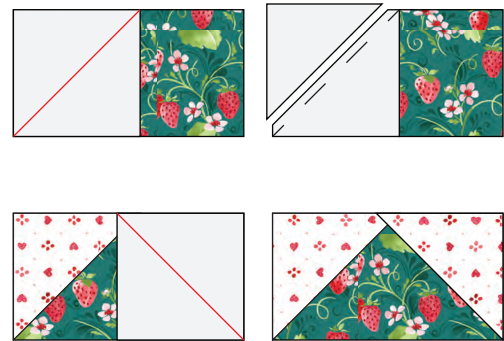
Three 2-3/4" x WOF strips; subcut thirty-two 2-3/4" squares.

## Make the Blocks

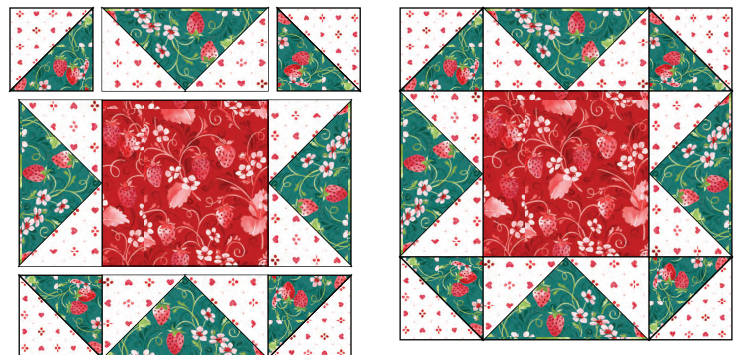
1. Draw a diagonal line on the back side of one 3-1/8" F square. Place right sides together with one 3-1/8" C square. Sew 1/4" to each side of drawn line. Cut apart on line. Repeat to create sixteen half-square triangle units. Square to 2-3/4".



2. Draw a diagonal line on the back side of two 2-3/4" F squares. With right sides together, place one marked square at one end of one 2-3/4" x 5" C rectangle. Sew on the drawn line. Trim 1/4" away from stitching. Press seam toward resulting F triangle. Repeat for other end of rectangle. Repeat to create sixteen flying-geese units. Square to 2-3/4" x 5".



3. Assemble one block using four half-square triangle units, four flying-geese units and one 5" D square. Sew units into rows; press. Sew rows together; press. Repeat to make four Star Blocks. Square to 9-1/2".



## Assembly

1. Sew one 1-1/2" x 9-1/2" A strip to opposite sides of one Star Block. Press toward the sashing strips. Repeat for each of the four blocks.



2. Referring to Assembly Diagram, lay Star Blocks, sashing strips and E setting triangles into correct placement.

3. Sew into diagonal rows and press toward the sashing strips. Sew rows together and continue to press toward sashing strips. Trim all four quilt sides to create straight edges, at least 1/4" past block points.

4. Sew one 1-1/2" x 57-1/2" A strip to opposite sides of runner. Press toward the inner border strips. Sew one 1-1/2" x 16-3/4" A strip to both ends of the runner. Press toward inner border strips.

5. Sew one 3" x 59-1/2" B strip to opposite sides of runner. Press toward the outer border strips. Sew one 3" x 21-3/4" B strip to both ends of the runner. Press toward outer border strips.

## Finishing

1. Prepare backing by pressing well to remove any creases.

2. Layer backing, batting and runner top. Baste and quilt as desired. Trim layers even with runner top squaring corners.

3. Prepare binding using 2 1/2" x WOF D strips. Sew binding to quilt using your preferred method.



Assembly Diagram