

Urban Garden Swag

Designed By Leslie Tucker Jenison of Bee Authentic
Featuring Urban Garden for RJR Fabrics



Finished Size approximately 12" x 18"





Urban Garden Swag Color Card

Featuring the Urban Garden fabric collection



3357-001



3357-002



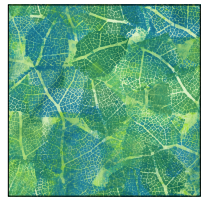
3358-001



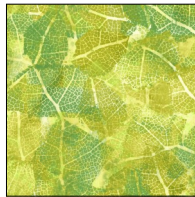
3358-002



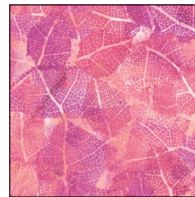
3358-003



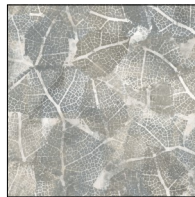
3359-001



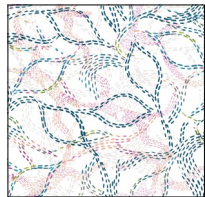
3359-002



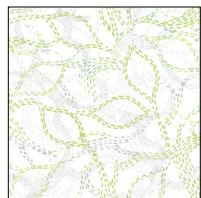
3359-003



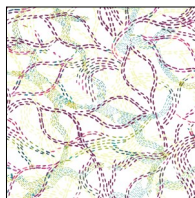
3359-004



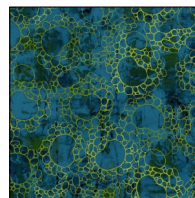
3360-001



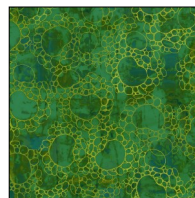
3360-002



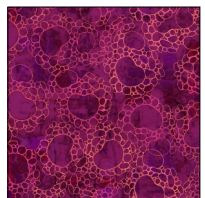
3360-003



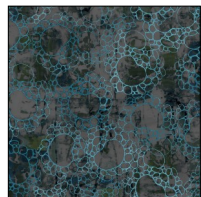
3361-001



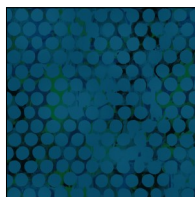
3361-002



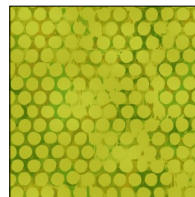
3361-003



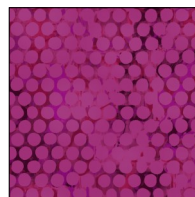
3361-004



3362-001



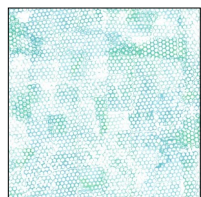
3362-002



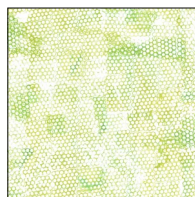
3362-003



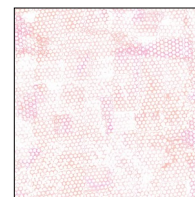
3362-004



3363-001



3363-002



3363-003



3363-004

Fabric Requirements and Cutting

Needed	Cut what
(1) Charm Pack, Urban Garden	(26) 5" squares
2/3 yard low-loft batting	(26) 5" squares
3/8 yard 3361-004 Pebblescape Soapstone	(3) 3-1/2" x WOF strips
1/4 yard green craft felt	(1) 5" x 13" rectangle, (1) 2" x 8" rectangle



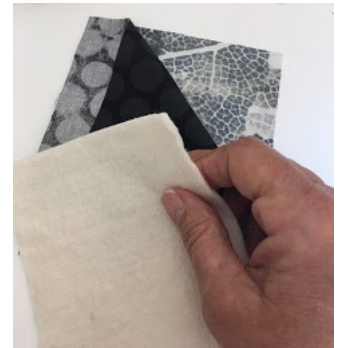
Leaf Assembly

Finished leaf size approximately 4-1/2" square

1. Trace around leaf template on the right side of (1) 5" charm square, using a removeable marking pen. For more variety, try free-sketching a leaf shape that fills the charm square.



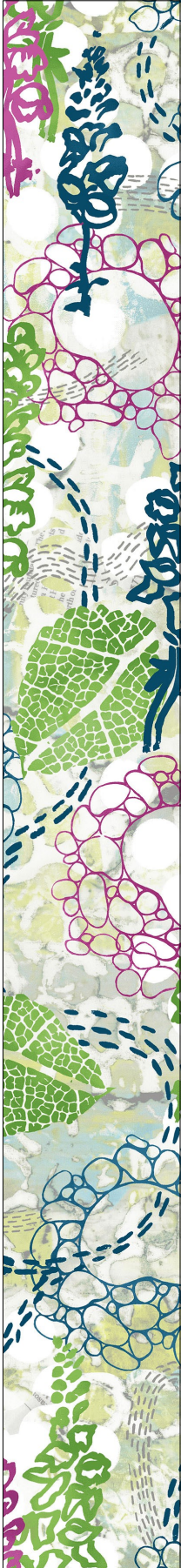
2. Place (1) 5" charm square, right side down. Place (1) 5" square batting on top. Top with marked charm square, right side up.



3. Sew on the line, leaving a 2" opening for turning. Backstitch at the beginning and end of your stitching.
4. Trim seam allowance to 1/8".



5. Turn right side out. Use a chopstick, knitting needle, or similar tool to gently poke out the leaf points. Press.





6. Turn under the opening and pin. Edge-stitch using matching thread to close the leaf opening.
7. Stitch leaf veins using contrasting thread. I used monofilament (clear) thread in my bobbin, but you can match your top and bottom threads if you like. Make 13 leaves.



Swag Assembly

1. Fold (1) 2" x 8" felt rectangle in half, right sides together. Stitch along the open side, stopping and starting 1" from each end.
2. Turn the loop right side out and press.
3. Overlap the open ends of the loop and pin. Stitch the loop to the top of swag back as shown.

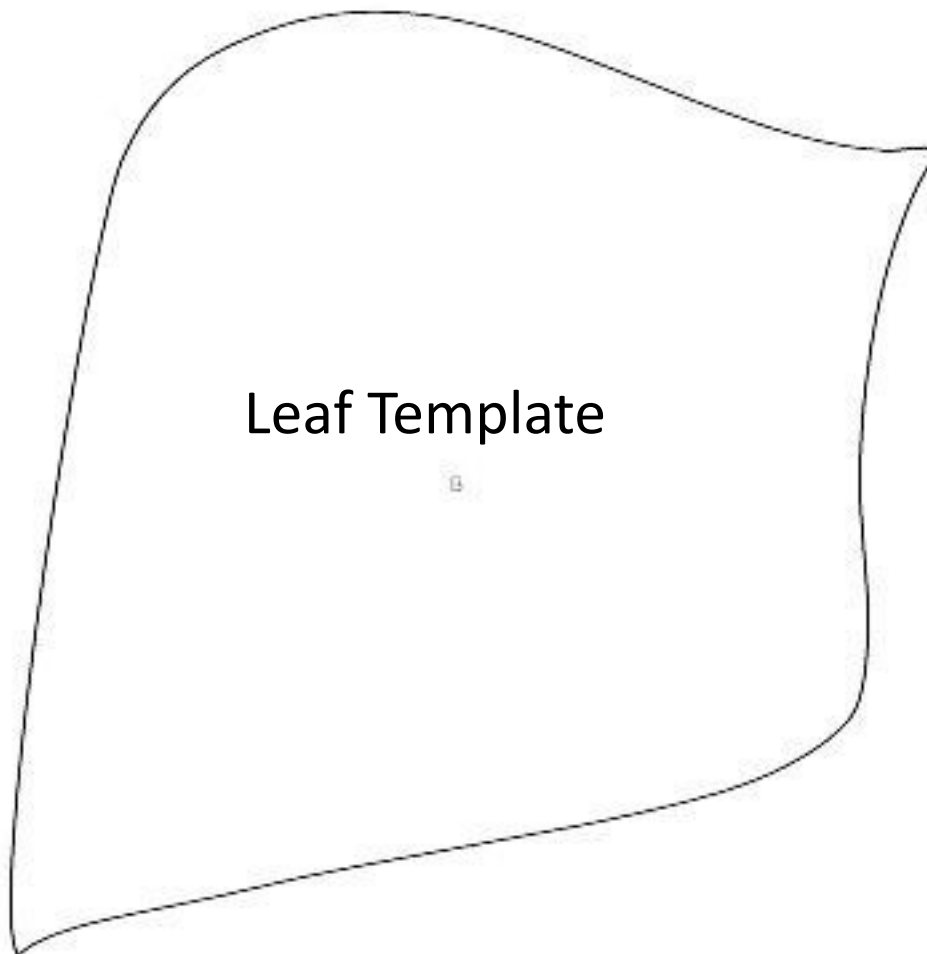


4. Lay (1) leaf at the bottom of (1) 5" x 13" felt rectangle as shown. Stitch by machine or by hand to attach the leaf to felt base.
5. Repeat Step 4, arranging leaves one at a time and stitching them to the base.





6. Stitch (3) 3-1/2" x WOF fabric strips together, end to end.
7. Press fabric ribbon in half lengthwise. Sew along the open edge, leaving an opening for turning.
8. Turn the fabric ribbon right side out and press. Hand-stitch the opening closed.
9. Form a bow and stitch it to the top of the swag by hand.



Leaf Template

